

## Ofsted

I would like to take this opportunity to thank you all for your continued support but particularly during our recent Ofsted inspection. Your positive messages, comments and letters demonstrated to the inspector how much you value your local community school. I look forward to sharing the report with you when it is published.

*Lindsay Thomson*

## Half Term holiday

Next week is the half term holiday, school will be closed. We hope all our families have a lovely week together.

## House Points



Willow house collected the most house points this half term and will therefore be the house for our non-uniform day on Friday 14<sup>th</sup> February. If your child is in Willow house (yellow PE t-shirts) they may wear their own clothes to school on Friday. Only children from Willow may wear non-uniform.

## Breakfast Club

Breakfast club is very busy this term and often full. You **MUST** book and pay for sessions in advance to reserve places for your children.

If you arrive without booking and we are full, your children will be turned away.

Please speak to Mrs Gibbs in the office.

## Lateness

We are disappointed at the amount of lateness in the mornings. If your child has been late for

class this week we have sent you a text. Please allow plenty of time in the mornings to get your child ready for school and in class on time. They must be past the green gate and going into class when the bell goes at 8.45am.

Lateness after registers close is recorded as an absence in your child's attendance record.

## Lunch Menu

A new lunch menu begins after the holiday. If you would like a copy please ask at the office.

## Nursery Offers

We are sending out offers for nursery places starting in September 2025. If you know anyone looking for a nursery place do ask them to come and apply.

## Sustainability



As part of the Q1E Trust, we recognise our responsibility to embed sustainability in everything we do. The Q1E Sustainability Vision sets out our ambition to be net zero and climate-ready by 2030 and to provide best-in-class sustainability learning for our children, combined with engagement across the whole school communities that we serve.

The Q1E Sustainability Vision is based on three action areas:

- Decarbonisation and Efficient Resource
- Biodiversity and Protecting Nature
- Climate Adaptation and Resilience

So far, we have joined the over 5,200 UK schools signed-up to Let's Go Zero 2030, and joined Education Nature Park. We are registered with EnergySparks to enable us to monitor and then start to reduce our energy usage. We will be starting food waste recycling next month, in addition to the general recycling already undertaken by our Eco-Council and staff.

We look forward to sharing more with you about sustainability at The Alton over the coming months and years. If you are interested in supporting us on our sustainability journey, please contact the school office or email us at ([admin@thealton.wandsworth.sch.uk](mailto:admin@thealton.wandsworth.sch.uk)) with sustainability in the subject line.

Q1E Sustainability Vision: [www.q1e.co.uk/about-us/sustainability/](http://www.q1e.co.uk/about-us/sustainability/)

Let's Go Zero 2030: [www.letsgozero.org/](http://www.letsgozero.org/)

Education Nature Park: [www.educationnaturepark.org.uk/](http://www.educationnaturepark.org.uk/)

EnergySparks: [www.energysparks.uk/](http://www.energysparks.uk/)

## Nail Varnish

A reminder nail varnish is not allowed, please remove nail varnish before school, thank you.



## Diary Dates

**\*Please check the diary dates on every newsletter to see what events are planned and when the school is open and closed.\***

<b>17 February to 21 February</b>	<b>Spring Half Term Holiday. School closed for children</b>
<b>24 February</b>	<b>School open for children</b>
4 March	Y3 trip Holly Lodge
12 March	Y2 trip Science Museum
28 March	Y2 trip Polka Theatre
4 April	Last day of Spring Term
<b>22 April</b>	<b>Inset Day. School closed for children</b>
<b>23 April</b>	<b>School open for children</b>
25 April	Y6 trip Polka Theatre
<b>5 May</b>	<b>Bank Holiday. School closed for children</b>
20 May	Y5 Loudmouth Theatre in school
22 May	Y1 Trip Barnes Wetland Centre
<b>26 May to 30 May</b>	<b>Summer Half Term Holiday. School closed for children</b>
<b>2 June</b>	<b>School open for children</b>
9 June	Y5 Cycle Training
10 June	Y6 Cycle Training
12 June	Fox class trip Bockett's Farm
23 June	Y5 trip Wimbledon tennis
2 July	Y3 trip Pizza Express
22 July	Last day of summer term





Getting creative at playtime!

## Roehampton Start for Life Offer

Start for Life is our offer for children under five and their families. Start for Life provides services and activities to support the Best Start for families in Wandsworth.

Half-Term  
17th February  
to  
21st February 2025



Contact us for information or to book a session on 020 8871 6655 or email: [RoehamptonChildrensCentres@RichmondandWandsworth.gov.uk](mailto:RoehamptonChildrensCentres@RichmondandWandsworth.gov.uk)

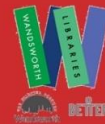
Find us on Facebook as Roehampton Children's Centres

## Love is Al -Ton Around Let's Celebrate Valentine's Day the Alton Way

Wednesday 12th February  
3.30 - 4.30 pm

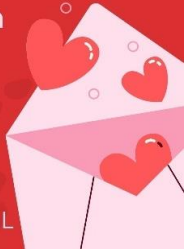
Roehampton Library

Come along after school and:  
Decorate heart biscuits  
Create a scratch art card  
Design a key ring  
Meet our design team



@AltonRenewal

@RoehamptonL



**NHS**  
South London  
Children and Young  
People's Community  
Immunisation Service

## Missed your flu vaccine?

Live or attend school in the borough  
of Wandsworth? Aged 2-19?  
Come down to a flu catch-up clinic and  
protect yourself this winter!

Monday 17 February  
12:00 - 16:00  
St John's Therapy Centre  
SW11 1SW

Please call 020 3903 3374 to book  
an appointment or for more  
information



Local Plan



Have your say on proposed updates to our planning policies to increase affordable housing

The changes being proposed would require developments to provide more of the types and sizes of homes local people need and increase the amount of social rented housing.

This includes a requirement for new developments to deliver 50% affordable housing, with a majority to be social housing.

You have until **24th February 2025** to share your views with us.

You can read our proposals in full and provide comments by:



Scan the QR, or visit:  
[wandsworth.gov.uk/LocalPlanReview](https://www.wandsworth.gov.uk/LocalPlanReview)

or you can view copies at Wandsworth Town Hall or local libraries.



An 'Easy Read' version of our proposals can be viewed online or at the Town Hall and local libraries.

For further information or support?  
email: [planningpolicy@wandsworth.gov.uk](mailto:planningpolicy@wandsworth.gov.uk)



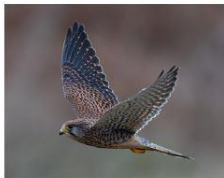
**DISCOVERERS** - Friends of Richmond Park

Free Family Event - Free Parking

**Birds in Richmond Park**

Sunday 16<sup>th</sup> February, drop in 1:30-3:30pm

Pembroke Lodge Gardens (Belvedere)



Photos by John Strachan

We are teaming up with the Richmond and Twickenham Local Group-RSPB on this occasion to enable you to discover the birds of Richmond Park.

There will be short guided walks, observation stations as well as art and science indoor activities on the theme of feathers.

Do come and join us!



**PLAYFUL DOSES DRAMA**

LIMITED SPACES - BOOKING ESSENTIAL!  
GO TO:  
[HTTPS://WWW.HAPPITY.CO.UK/PLAYFUL-DOSES-DRAMA](https://www.happity.co.uk/playful-doses-drama)

**PLAYFUL MAYHEM COMES TO WANDSWORTH!**  
**BREAKFAST & DRAMA CLUB**

**SATURDAYS 10.30AM TO 12PM**  
FROM 22 FEBRUARY TO 26 APRIL 2025

**ALTON ARTS HUB**  
6 PORTSWOOD PLACE  
ROEHAMPTON  
LONDON SW15 4ED

Calling all parents/carers and your 3-7 year olds!

Join us for FREE breakfast and drama sessions.

Come to relax? Jump straight in?

Our playful sessions will help create cherished and fun memories.

Bring your children and let's have fun together!

**COMMUNITY FUND**

[www.playfuldosesdrama.com](http://www.playfuldosesdrama.com)

[@playful\\_doses\\_drama](https://www.instagram.com/playful_doses_drama)

**Free Messy Play**

NEW SESSIONS FOR 2025  
15TH AND 22ND FEBRUARY  
10.00 - 11.30 AM  
FOR AGES 0 TO 5 YEARS (SEND KIDS UP TO 8 YRS)

Booking Essential.  
Please contact Orleen  
[Omcintosh@hotmail.co.uk](mailto:Omcintosh@hotmail.co.uk)

All sessions will take place in St Joseph's Church, Roehampton  
Places must be booked in advance. Please contact Orleen  
[Omcintosh@hotmail.co.uk](mailto:Omcintosh@hotmail.co.uk)

Supported by  
**ALTON**  
ROEHAMPTON SW15